

School of Civil and Environmental Engineering

Spring 2024 Orientation
January 5, 2024

Welcome to Georgia Tech!

55

Faculty

630

UG Students

390

Graduate
Students



CEE Leadership



Donald Webster, Ph.D.
Karen and John Huff
School Chair



Susan Burns, Ph.D.
Associate Chair for Finance
and Administration



John Taylor, Ph.D.
Associate Chair for Faculty
Development and
Research Innovation



Lauren Stewart, Ph.D.
Interim Associate Chair for
Graduate Programs



Kevin Haas
Associate Chair
Undergraduate Programs



Adjo Amekudzi-Kennedy
Associate Chair for Global
Engineering Leadership
and Entrepreneurship

Graduate Student Services Office

Mason Building Suite 1220

[https://gsso.ce.gatech.edu/
gradinfo@ce.gatech.edu](https://gsso.ce.gatech.edu/gradinfo@ce.gatech.edu)

Lauren Stewart, Ph.D.
Interim Associate Chair for
Graduate Programs



New graduate programs,
Graduate student
concerns/advocacy

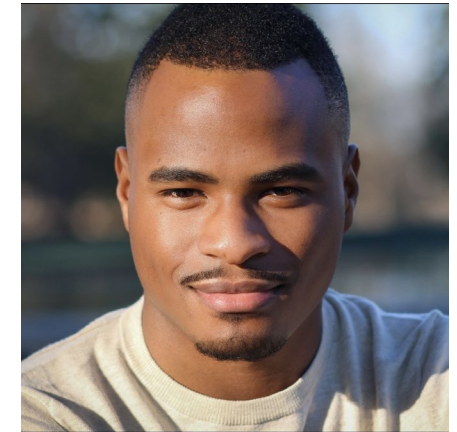
**Danielle Lesperance
Ramirez**
Graduate Programs Manager



PhD student advising,
Policy and Procedures

Jerome Pondexter II

Academic Program
Coordinator



Master's student
advising, International
Student Support

Agenda

10:00am-11:00am

Overview of CEE Program

Dr. Lauren Stewart and Danielle Ramirez

11:00am-11:30am

Q&A

11:30am-12:30pm

GRA Orientation

1:00pm -3:40pm

Affinity Group Orientations

CISE-SEB 122

ENVE-ES&T 3229

GEO-Mason 1132

SEMM-Mason 2119

TSE-To be determined

Water-Mason 2228

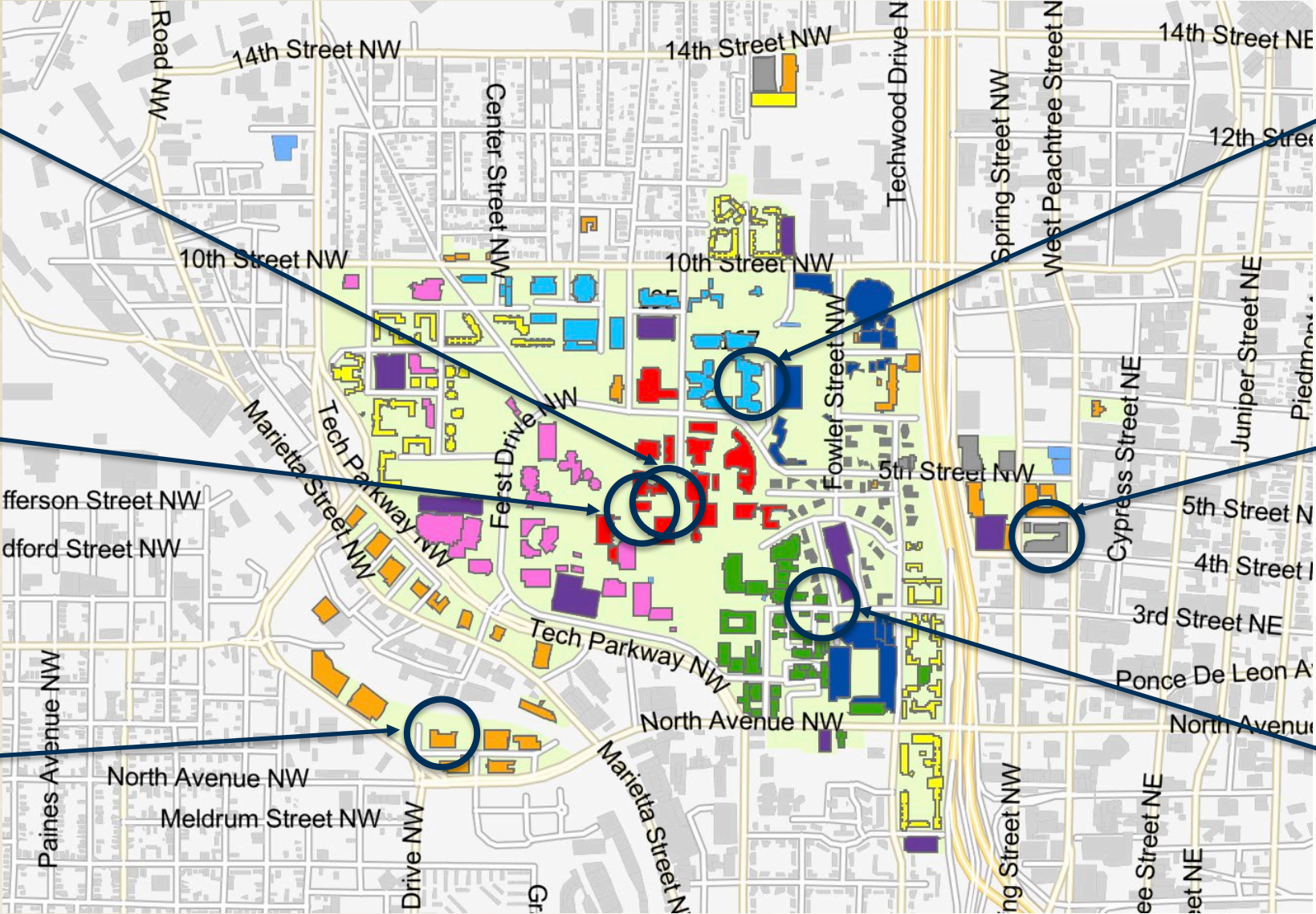
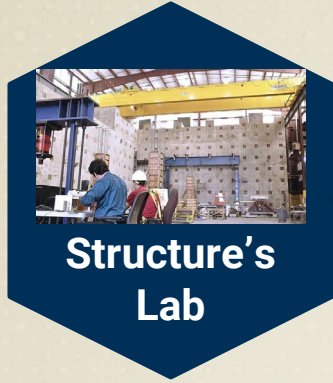
4:30pm-6:30pm

Orientation Reception!

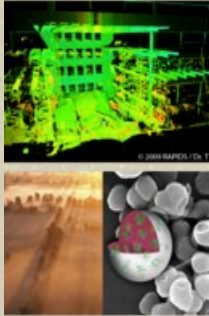
Mason Lobby



CEE Facilities

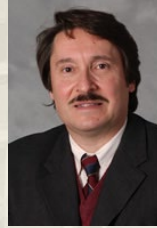


CEE Affinity Groups



Water Resources Engineering

- Circulation and transport in estuaries, rivers, and lakes
- Flood/drought forecasting
- Ocean modeling



Aris Georgakakos



Environmental Engineering

- Chemistry and transport
- Adaptation of microbial communities; health risk
- Nanotechnology applications; sustainable systems



Transportation Systems Engineering

- Safety in traffic design
- Monitoring and modeling travel behavior
- Intermodal transportation



Xing Xie



Adjo Amekudzi-Kennedy

Geosystems Engineering

- Energy & mining applications
- In-situ testing/characterization
- Shear bands and hydraulic fractures in soils



Sheng Dai

Structural Engineering, Mechanics and Materials

- Blast effects and resistance
- Durability of materials
- Seismic hazard mitigation



Phanish Suryanarayana

Construction and Infrastructure Systems Engineering

- Infrastructure sensors
- Data modeling/visualization
- Knowledge management for decision support systems



Yi-Chang James Tsai

Research and Research Centers

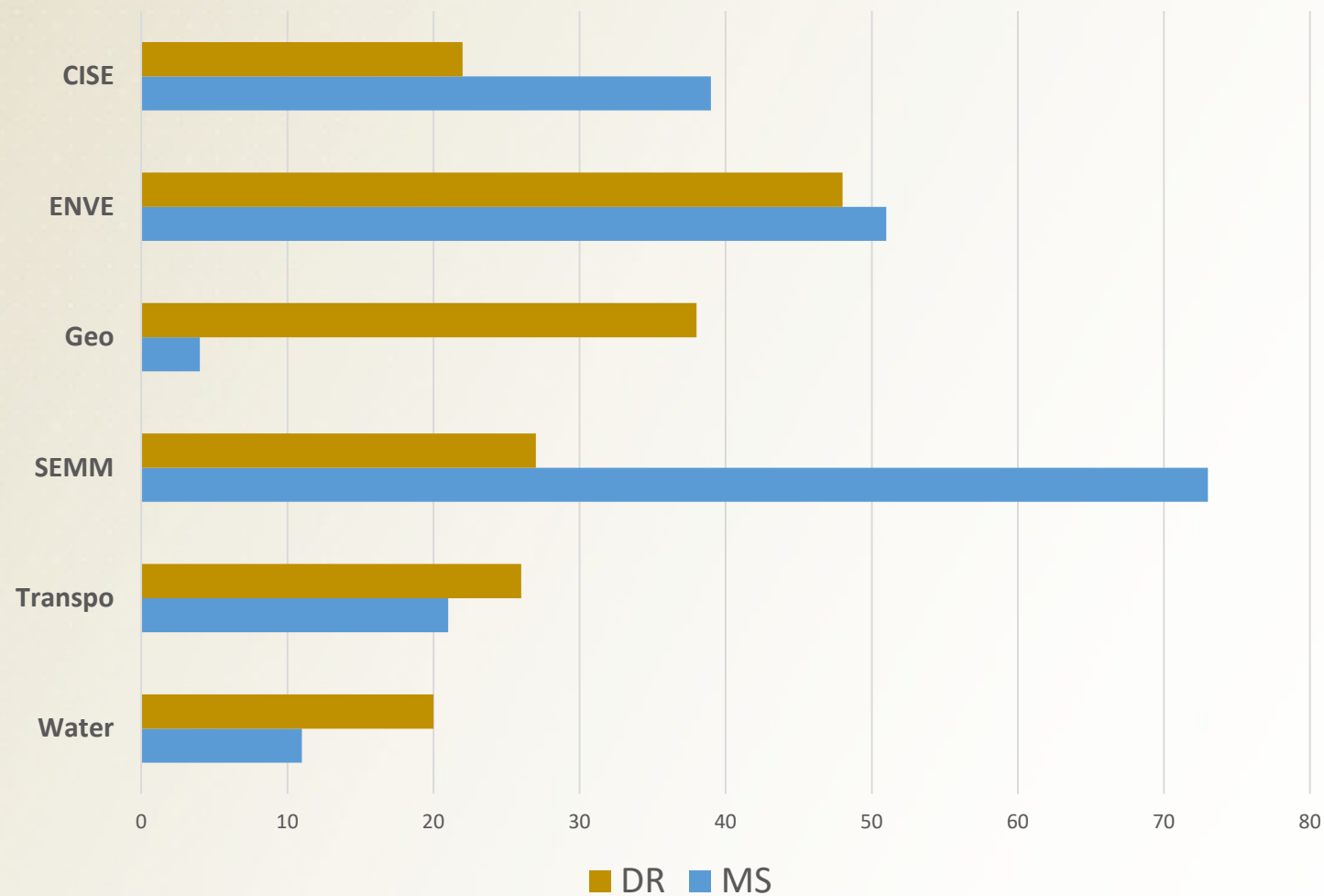
**\$20M
Annual
Research**

- Georgia Transportation Institute
- Georgia Water Resources Institute
- Brook Byers Institute for Sustainable Systems
- Strategic Energy Institute
- Center for Bio-mediated and Bio-inspired Geotechnics
- Southeastern Center for Air Pollution & Epidemiology
- University Transportation Centers
 - Center for Advancing Research in Transportation Emissions, Energy and Health (CAR-TEEH)
 - Inspecting and Preserving Infrastructure through Robotic Exploration
 - National Center for Sustainable Transportation
 - STRIDE: Southeastern Transportation Research, Innovation, Development and Education Center
 - Teaching Old Models New Tricks (TOMNET)

Enrollment by Group



Fall 23 Grad Enrollment by Specialization



Getting Involved

CEE Entrepreneurial Impact Competition

School of Civil and Environmental Engineering

College of Engineering

[Home](#) | [About](#) | [Prospective Students](#) | [Academics](#) | [Student Life](#) | [Research](#) | [People](#) | [Engage](#) | [News & Events](#)



Entrepreneurial Impact Competition

About the Competition

The Entrepreneurial Impact Competition provides students with a hands-on opportunity to apply their civil and environmental engineering knowledge outside the classroom by creating innovative concepts to improve the human condition—and potentially win a \$5,000 prize.

Established in 2021, the competition is open to individuals or teams of students at both the undergraduate and graduate level who compete for a chance to win by conceptualizing entrepreneurial ventures that may help fellow students at Georgia Tech, create positive change for the local Atlanta community or impact society more broadly.

After assessing all submissions, a panel of judges will select the finalists to participate in a live competition. During the final competition, each team or individual will present their idea to the panel of judges, who will deliberate and select the top two proposals to win the Higginbotham Entrepreneurship Award and the Zeitlin Innovation Award.

About the Prizes

The Zeitlin Innovation Award rewards individuals and teams for their creativity and innovation, emphasizing the potential of their projects and ideas to improve the human condition. The winner of this award will be recognized for the merits of their concept at any stage of development.

The Higginbotham Entrepreneurship Award rewards individuals and teams for innovative ideas and recognizes the relative maturity of their efforts. Winners will have identified and tailored their concept to specific end-users with an emphasis on bringing their concept to market.



Zeitlin
Innovation
Award
\$5,000

Higginbotham
Entrepreneurship
Prize
\$5,000

<https://ce.gatech.edu/eic>

Center for Teaching and Learning

- Communication courses
- Workshops
- T.A. Orientation
- Tech to Teaching
- Graduate Teaching Scholars Program

ctl.gatech.edu

- CEE Future Faculty Fellows Program



INDIANA STATE
UNIVERSITY



TEXAS
STATE
UNIVERSITY



Student Organizations

- American Society of Civil Engineers
- Association of Environmental Engineers & Scientists
- Engineers Without Borders
- Engineers for a Sustainable World
- Earthquake Engineering Research Institute
- Geotechnical Society
- American Society of Highway Engineers
- Institute of Transportation Engineers



<http://www.ce.gatech.edu/academics/student-organizations>

Resources

Resources

- <https://www.sga.gatech.edu/resources/>



- Bus Tracking
- GT CARE (Mental Health Support)
- Veteran's Resource Center
- Women's Resource Center
- Room Reservations
- Biking Resources
- LiveSafe
- Emergency Notifications

.... and more

The background of the slide features a faded, sepia-toned photograph of a vintage open-top car parked on a lawn. The car has a large 'Georgia Tech' logo on its side. In the background, a large, multi-story brick building with many windows is visible, partially obscured by trees. The overall tone is historical and academic.

Requirements and the Path to Graduation...

Academic Integrity

Georgia Tech Honor Challenge

I commit to uphold the ideals of honor and integrity by refusing to betray the trust bestowed upon me as a member of the Georgia Tech community.

Honor Agreement

Having read the Georgia Institute of Technology Academic Honor Code, I understand and accept my responsibility as a member of the Georgia Tech Community to uphold the Academic Honor Code at all times. In addition, I understand my options for reporting honor violations as detailed in the code.

Office of Student Integrity (OSI)

<https://osi.gatech.edu/students/honor-code>

Degree Requirements-MS

MSCE Degree Requirements	Non-Thesis Option	Thesis Option
Specialization Requirement	18 credits	12 credits
Approved Electives	12 credits	12 credits
Thesis	0 credits	6 credits
TOTAL REQUIRED CREDITS	30 credits	30 credits

MSENVE Degree Requirements	Non-Thesis Option	Thesis Option
Specialization Requirement	15 credits	15 credits
Approved Electives	15 credits	9 credits
Thesis	0 credits	6 credits
TOTAL REQUIRED CREDITS	30 credits	30 credits

- non-thesis: 2-3 semesters
- thesis: 1.5-2 years

Degree Requirements-MS CSE

MSCSE Degree Requirements

CSE Core	12	Four of these five courses: CSE 6140- Algorithms CSE 6730/ECE 6730-Modeling and Simulation CSE/ISYE 6740-Computational Data Analysis CSE 6220-High Performance Computing CSE/MATH 6643-Numerical Methods in CSE
Home Unit Specialization	12	CEE classes, all within the same specializations. Some specializations have required Home Unit courses. Refer to https://gsso.ce.gatech.edu/
Approved Electives or Thesis	6	Courses subject to approval by faculty advisor
TOTAL REQUIRED CREDITS	30	

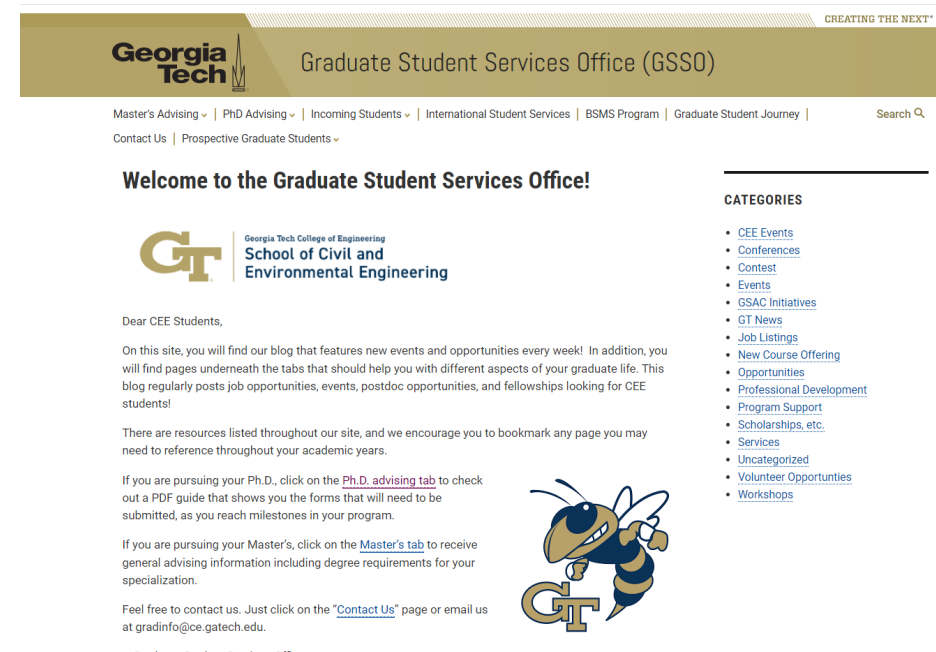
CEE Faculty Advisor contacts:

- CISE: Dr. Eric Marks (eric.marks@gatech.edu)
- ENVE: Dr. Ted Russell (ted.russell@ce.gatech.edu)
- GEO: Dr. David Frost (david.frost@ce.gatech.edu) and Jorge Macedo (Jorge.Macedo@ce.gatech.edu)
- SEMM: Dr. Yang Wang (yang.wang@ce.gatech.edu)
- TSE: Dr. Randall Guensler (randall.guensler@ce.gatech.edu)
- WATER: Dr. Jian Luo (jian.luo@ce.gatech.edu)
- CEE Graduate Programs/CSE-CEE Home Unit Coordinator: Dr. Lauren Stewart (lauren.stewart@ce.gatech.edu)
- CEE Graduate Programs – General Questions: Danielle Ramirez (danielle.ramirez@ce.gatech.edu)

Communicating with the GSSO

<https://gssso.ce.gatech.edu/>

- MS Degree Requirements
- International Student Support
- Policy
- Weekly blog
 - Job Listing
 - Events



Do not unsubscribe or you may miss important news and updates.

Communicating with the GSSO

CEE Graduate Students Teams Channel



- Fun news and events
- Social posts
- Quick announcements
- Schedule virtual advising meetings
- Please *do not* use Teams chat for questions and work requests. Instead, email, call or come in person.

Canvas: CEE PhD Path to Graduation

CEE PhD Path to Graduation

Home

Announcements

Assignments

Grades

People

Files

Media Gallery

GT Student Resources

CEE PhD Path to Graduation


Announcements

Assignments (PhD Forms)

View Progress

People

Files



Home

Announcements

Assignments

Grades

People

Files

Media Gallery

GT Student Resources

Grades for Test Student

Print Grades

Arrange By

Assignment Group

Apply

Assignments

Learning Mastery

Name	Due	Status	Score
Responsible Conduct of Research-Online and Course PhD Forms			-
Comprehensive Exam Results PhD Forms			✓
Thesis Advisory Committee PhD Forms			-
Program of Study PhD Forms			-
Proposal Results PhD Forms			-
Admission to Candidacy PhD Forms			✓
Doctoral Minor PhD Forms			✓
Defense Committee Form PhD Forms			-
Defense Announcement PhD Forms			-
Thesis Defense Results PhD Forms			-
Certificate of Thesis Approval PhD Forms			-
Enrollment Waiver-Not Required PhD Forms			-
PhD Forms		N/A	0.00 / 0.00
Total		N/A	0.00 / 0.00

Program of Study

Published

Edit

To be submitted when you are close to 50 credits beyond your Bachelor's degree, usually around the same time as the [Admission to Candidacy Form](#). Include ALL courses taken after your Bachelors, even those taken outside of Georgia Tech or outside the US.

[Program of Study form](#)

Signatories:

- Advisor
- Associate Chair for Graduate Programs, Dr. Lauren Stewart (lstewart32@gatech.edu, not lauren.stewart@ce.gatech.edu).

Notes:

Your Program of Study should include about 50 credits beyond your Bachelor's degree.

Major Courses: Only Letter Grade, Grad level Classes. **NO seminars or research credits**

Minor Courses: Courses that you will use towards your Doctoral Minor requirement. Please be advised you will still need to submit the [Doctoral Minor Form](#).

Other Courses: All other courses. Do not include research credits.

Points 0

Submitting a file upload

Buzzport

- View schedule of classes
- Register for classes
- Pay tuition and fees
- Access to essential resources
- Important announcement

www.buzzport.gatech.edu

The screenshot displays the Buzzport Student portal. At the top, navigation links include Home, Staff, Student (highlighted), and Institute Information. The main content is organized into three primary sections: Registration & Student Services, Policies & Curriculum, and Identity Management. The Registration & Student Services section contains a grid of icons for Canvas, Course Details, DegreeWorks, LiveSafe, Office 365 (Email), Order a Transcript, Pay Now (Bursar), Registration (OSCAR), Salesforce Advisor Link, Schedule of Classes, Transfer Equivs., and Update Emergency Contacts. The Policies & Curriculum section includes icons for the Catalog, Course Evaluations, and Policy Library. The Identity Management section features icons for Passport, gtID#, and BuzzCard. On the right side, there is an 'Announcements for Students' section with three bullet points: 'Summer 2022 Final Grade Entry is Ongoing', 'Transcript Ordering Storefront Upgraded', and 'If you see a "Session Timeout" error when accessing OSCAR...'. Below this is a 'My Courses' section with links to 'Canvas Learning Management System', 'Student Detail Schedule', and 'Week at a Glance'.

Home Staff **Student** Institute Information

Registration & Student Services

- Canvas
- Course Details
- DegreeWorks
- LiveSafe
- Office 365 (Email)
- Order a Transcript
- Pay Now (Bursar)
- Registration (OSCAR)
- Salesforce Advisor Link
- Schedule of Classes
- Transfer Equivs.
- Update Emergency Contacts

Policies & Curriculum

- Catalog
- Course Evaluations
- Policy Library

Identity Management

- Passport
- gtID#
- BuzzCard

Announcements for Students

- **Summer 2022 Final Grade Entry is Ongoing**
 - Summer 2022 final grades will become visible to students by 6:00 PM EDT on Tuesday, August 9th, 2022.
- **Transcript Ordering Storefront Upgraded**
 - Georgia Tech's transcript vendor, Parchment, recently upgraded its storefront where students and alumni request transcripts and replacement diplomas. To accommodate this change, all Parchment user accounts are deactivated. All students and alumni will need to create a new account to place an order.
- **If you see a "Session Timeout" error when accessing OSCAR...**
 - The "Session Timeout" error is evidence of an expired cookie stored in the browser. Using a private or incognito window might or might not solve the problem. Switch to a different browser and/or clear out stored cookies.
- **Updates on the campus response to coronavirus (Covid-19)**
 - [Tech Moving Forward](#)

My Courses

- [Canvas Learning Management System](#)
- [Student Detail Schedule](#)
- [Week at a Glance](#)

Registration Guidance can be found here: <https://gsso.ce.gatech.edu/incoming-students/registration/>

DegreeWorks-MS

MSCE - Major Requirements

INCOMPLETE

Catalog year: 2022-2023 GPA: 4.00

Unmet conditions for this set of requirements:

24 hours required to meet Degree Requirements

	Course	Title	Grade	Credits	Term	Repeated
<input checked="" type="radio"/> MSCE - Non-Thesis Option	Select one specialization of coursework. Elective requirements can be completed with additional specialization course work or courses approved by your advisor.					
<input type="radio"/> Specialization Requirements	Still needed:		Choose from 1 of the following:			
<input type="radio"/> Construction and Infrastructure Systems Engineering	18 credits of Construction and Infrastructure Systems Engineering coursework required.					
<input type="radio"/> Environmental Engineering	You must complete all of the following:					
<input type="radio"/> Environmental Engineering Required Coursework	2 Classes in CEE 6310 or 6311 or 6312					
<input type="radio"/> Additional Environmental Engineering Coursework	12 credits of Environmental Engineering coursework required.					
<input type="radio"/> Water Resources Engineering	18 credits of Environmental Fluid Mechanics & Water Resources coursework required.					
<input type="radio"/> Geosystems Engineering	18 credits of Geosystems Engineering coursework required.					
<input type="radio"/> Structural Engineering, Mechanics & Materials	You must complete the following:					
<input checked="" type="radio"/> Strength of Materials	CEE 6551	Strength of Materials	IP	(3)	Fall 2023	
<input type="radio"/> Structural Engineering, Mechanics & Materials Coursework	CEE 6521	Reinfor Concrete Members	A	3	Fall 2022	
	12 credits of Structural Engineering, Mechanics, & Materials coursework required.					
<input type="radio"/> Transportation Systems	18 Credits in CEE 6601 or 6602 or 6603 or 8097 or 8900 or 8956					
<input type="radio"/> Elective Requirements	Still needed:		12 credits of approved Electives are required. Please consult with your advisor regarding your required courses. Your advisor will apply courses to satisfy requirements.			

DegreeWorks-MS

Fall Through

Credits applied: 9 Classes applied: 3

Course	Title	Grade	Credits	Term	Repeated
CEE 4530	Timber & Masonry Design	A	3	Spring 2023	
CEE 4550	Structural Analysis II	IP	(3)	Fall 2023	
CEE 6150	Construction Law	A	3	Spring 2023	

Preregistered

Credits applied: 6 Classes applied: 2

Course	Title	Grade	Credits	Term	Repeated
CEE 4550	Structural Analysis II	IP	(3)	Fall 2023	
CEE 6551	Strength of Materials	IP	(3)	Fall 2023	

Notes

Status	Description	Created on	Created by
	Registrar's Office Audit (SP'21 BSCE): Student is on track for graduation.	03/18/2021	Raines, Lisa L

DegreeWorks-BS MS

Notes

Status	Description	Created on	Created by
	Please double count CEE 6603 towards the Transportation Specialization. Please double count CEE 6605 towards the Elective requirement. Please move over CEE 4610 and CEE 4620 towards the elective requirement.	02/17/2023	Lesperance, Danielle A
	Please make the following exceptions for [REDACTED]: Move CEE 6603 to technical elective Move CEE 4610 to fallthrough Warm Regards, Tracy Miller	04/18/2022	Lucas, Angela D
	Registrar's Office Audit (SP'22 BSCE): Student is on track for graduation.	03/03/2022	Vaughn, Jacob D
	Registrar's Office Audit (SP'22 BSCE): Student is on track for graduation. Pending grades for minor requirements.	03/01/2022	Lucas, Angela D

DegreeWorks

☐ MSCE - Thesis Option

Select one specialization of coursework. Elective requirements can be completed with additional specialization course work or courses approved by your advisor.

☒ Specialization Requirements

<input checked="" type="radio"/> Transportation Systems	CEE 6601	Statistics in Transport	C	4	Spring 2023
	CEE 6603	Traffic Engineering	A	3	Spring 2022
	CEE 8097	Intro Transpo Research	S	1	Fall 2021
	CEE 6701	Urban Trans Planning	A	3	Fall 2021
	CEE 8813	ST: Transpo System Analysis	C	3	Spring 2022
	Exception by:	Lesperance, Danielle A	On: 04/26/2023	Apply Here:	Apply CEE 6601 here.
	Exception by:	Lesperance, Danielle A	On: 06/28/2023	Apply Here:	Apply CEE 6603 here.
	Exception by:	Lesperance, Danielle A	On: 04/26/2023	Apply Here:	Apply CEE 8097 here.
	Exception by:	Lesperance, Danielle A	On: 04/26/2023	Apply Here:	Apply CEE 6701 here.
	Exception by:	Lesperance, Danielle A	On: 06/28/2023	Apply Here:	Apply CEE 8813 here.
Exception by:	Lesperance, Danielle A	On: 06/28/2023	Apply Here:	Apply CEE 8813 here.	

☐ Elective Requirements

CEE 6651	Infrastructure Systems	A	3	Fall 2022
CEE 6632	Simulation in Transport	B	3	Spring 2022
CEE 8813	ST: Airline Revenue Management	IP	(3)	Fall 2023
CEE 6623	Survey Design and Analy	B	3	Fall 2021

DegreeWorks-P hD

Degree Requirements

INCOMPLETE

Catalog year: 2020-2021 GPA: 4.00

✓	RCR-Online Training	RCR - Online Training	Y
✓	RCR-Doctoral Course	RCR - DR Course	Y
○	Admission to Candidacy	Still needed:	Students must be Admitted to Candidacy prior to applying to graduate. Review with your advisor and submit required forms to the Graduate Studies Office.
○	Doctoral Minor	Still needed:	The Doctoral Minor is a degree requirement. Review with your advisor and submit the Doctoral Minor form to the Graduate Studies Office.
✓	Full Graduate Standing		
✓	3.0 Overall GPA Requirement Met		
○	Degree Status Information	Still needed:	Specific course requirements are not available at this time. This audit is intended to provide current degree status only, in addition to any completed coursework. Your application and graduation status appear above under the first section, entitled 'Student View.'

Fall Through

Credits applied: 144 Classes applied: 21

Course	Title	Grade	Credits	Term	Repeated
CEE 6310	Process Principles-EnvE	A	3	Fall 2020	
CEE 6311	Microbial Principles	A	3	Fall 2020	

Independent Sections

CEE 7000 – MS Thesis. (Pass/fail only.)

CEE 8900 – Special Problems. (Letter-grade, audit, or pass/fail.) This is intended for non-research independent study. Examples include replicating course content from a course not currently offered, exploratory topic with a small handful of students, or a project-based independent study.
PERMIT ONLY

CEE 8902 – Special Problems. (Pass/fail only.) Reserved for funded non-thesis MS students. Only used as filler credit to reach 21 hours (16 in Summer). **PERMIT ONLY. WILL NOT COUNT TOWARDS A DEGREE.**

CEE 8956 – Master’s Research Problem. (Pass/fail only.) Intended for MS-level research which doesn’t culminate in a thesis. (Maximum 3cr pass/fail toward the degree.) **PERMIT ONLY**

CEE 9000 – Doctoral Thesis. (Pass/fail only.)

Request a permit at permits@ce.gatech.edu. Include your GTID and the CRN for the course. Copy the instructor on the email. We must have their approval before issuing the permit.

Permits are also required for registering for classes with the same course number such as CEE 8813, or registering for 4000 level classes.

Funded Students Registration

“21 Hour Rule”

GRA/GTA - Thesis

12 hours of letter-grade or pass-fail work + thesis hours (CEE 7000 for MS, CEE 9000 for PhD) to reach total of 21 hours (16 hours in the summer)

GRA/GTA - Non-Thesis

12 hours of letter-grade or pass-fail work + Special Problems* (CEE 8902) to reach total of 21 hours. (16 hour in the summer)

*Please note there are multiple Special Problems – make sure to select CEE 8902.

General Academic Resources

GSSO Website (<http://gsso.ce.gatech.edu>)

CEE Website (<http://cee.gatech.edu/>)

CEE Intranet (<https://intranet.ce.gatech.edu/>)

CARE Center (<https://care.gatech.edu/>)

General Catalog (<http://www.catalog.gatech.edu/>)

Graduate Studies (<http://www.grad.gatech.edu>)

Int'l Student & Scholar Services and Study Abroad
(<http://oie.gatech.edu/>)

Library (<http://www.library.gatech.edu/>)

Office for Information Tech (<http://www.oit.gatech.edu/>)

Registrar's Office (<http://www.registrar.gatech.edu/>)

<https://ce.gatech.edu/academics/graduate/phd>



PhD with a major in Bioengineering

The mission of this program is to educate students and advance research that integrates engineering principles with the life sciences to improve health, the environment and engineering applications.



PhD with a major in Computational Science & Engineering

Students in this program will address the body of knowledge, skills, and practices associated with the study of computer-based models of natural phenomena and engineered systems.



PhD with a major in Ocean Science & Engineering

This program combines the basic and applied sciences with innovative ocean technologies to advance research at the intersection of the physical, biological, chemical and human dimensions of ocean systems.

Additional Resources

Thesis and Dissertation Forms

All forms required for current Ph.D. students are available on the [Georgia Tech Graduate Studies Office](#) website or in CEE's Graduate Student Services Office, located in Suite 1220 of the Mason Building. Stop by to speak with an advisor or send an email to gradinfo@ce.gatech.edu if you need assistance.

Contact the Graduate Student Services Office

Have questions for us? [Contact the Graduate Student Services Office](#) to speak with an advisor.

Looking for more information about day-to-day life as a CEE graduate student? [Visit the GSSO blog to find out.](#)

Graduate Student Handbook

[Graduate Student Handbook.pdf](#) >>

File last updated Jul 07, 2022

Helpful Tips and Reminders

Institute Academic Calendar: www.registrar.gatech.edu

Adhere to ALL Institute and CEE deadlines. Bookmark this page or use the Subscribe feature.

Registration closes PROMPTLY at 4pm on August 25th.

Familiarize yourself with BuzzPort: www.buzzport.gatech.edu

Always keep your emergency contacts updated.

Check your GT email daily – Institute policy

Sign up for GTENS (Georgia Tech Emergency Notification System). Sign up at passport.gatech.edu.

Most form are now available through DocuSign, the preferred method:

<https://esignature.gatech.edu/cfeis/docusign/>

Agenda

10:00am-11:00am

Overview of CEE Program

Dr. Lauren Stewart and Danielle Ramirez

11:00am-11:30am

Q&A

11:30am-12:30pm

GRA Orientation

1:00pm -3:40pm

Affinity Group Orientations

CISE-SEB 122

ENVE-ES&T 3229

GEO-Mason 1132

SEMM-Mason 2119

TSE-To be determined

Water-Mason 2228

4:30pm-6:30pm

Orientation Reception!

Mason Lobby



Questions?